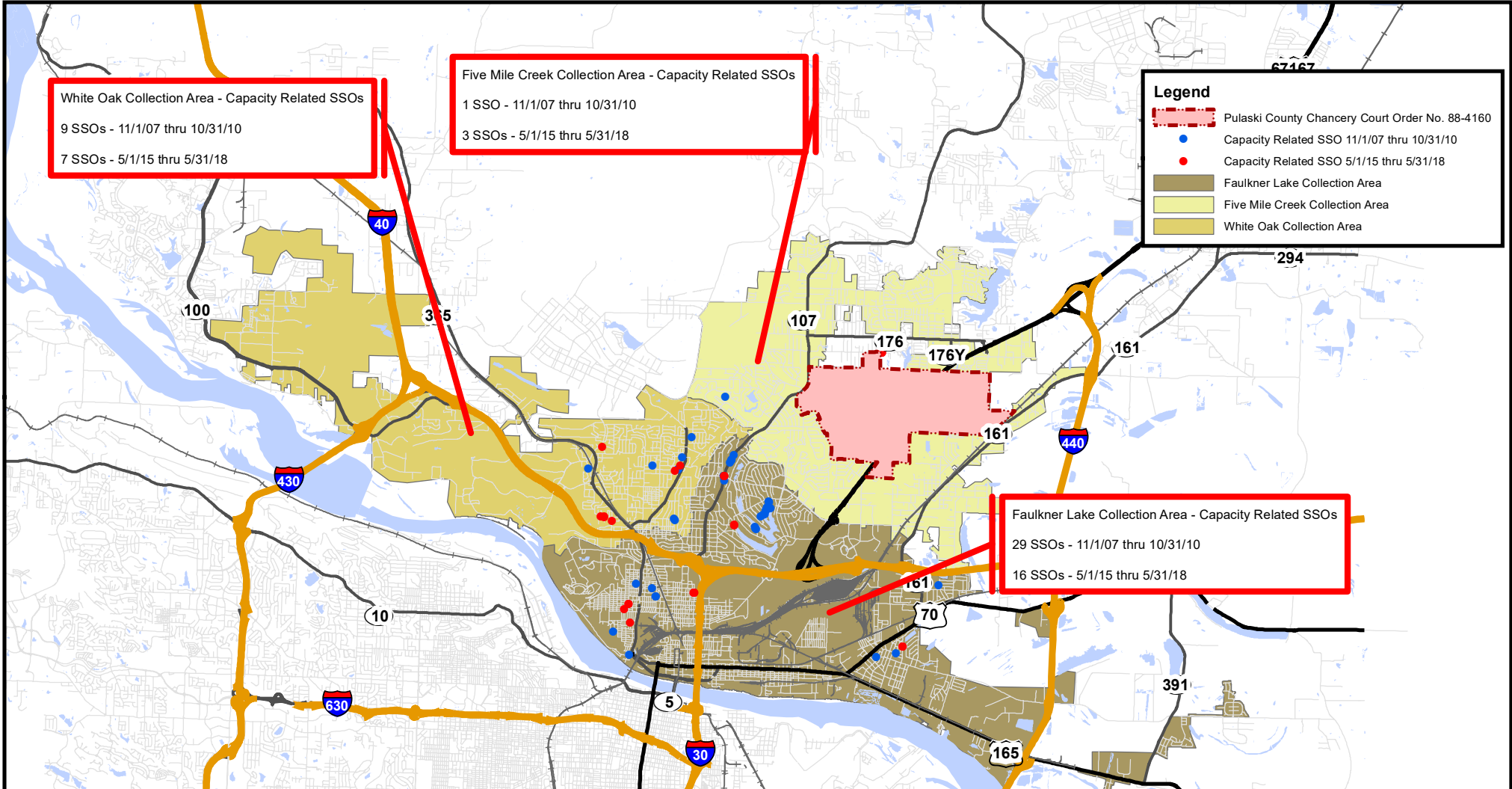


North Little Rock Wastewater Response to Bailey Taylor E-Mail 6/29/2018

1.a.iii. Please provide a map identifying Faulkner Lake, Five Mile Creek, and White Oak Bayou collection areas with the locations of the reported capacity related SSOs overlaid for the 3-year period between November 1, 2007 and October 31, 2010 as well as the 3-year period between May 1, 2015 and May 31, 2018.



Printed 7/25/18
Prepared by Jim Milum

North Little Rock Wastewater Capacity Related SSOs

The data contained herein was compiled from various sources for the sole use and benefit of the North Little Rock Waste Water Utility. Any use of the data by anyone other than the North Little Rock Waste Water Utility is at the sole risk of the user, and by acceptance of this data, the user does hereby hold the North Little Rock Waste Water Utility and the City of North Little Rock harmless and without liability from any claims, costs, or damages of any nature against the North Little Rock Waste Water Utility and the City of North Little Rock, including cost of defense arising from improper use of the data or use by another party. Acceptance or use of this data is done without any expressed or implied warranties.

North Little Rock Wastewater

Response to Bailey Taylor E-Mail 6/29/2018

1.a.iii. Please provide a map identifying Faulkner Lake, Five Mile Creek, and White Oak Bayou collection areas with the locations of the reported capacity related SSOs overlaid for the 3-year period between November 1, 2007 and October 31, 2010 as well as the 3-year period between May 1, 2015 and May 31, 2018.

